

NEWSLETTER

Winter 2017



Our Mission:

To promote and maintain a healthy lake environment, and to encourage the responsible use of Bay Lake for the enjoyment and benefit of our community today and for the future

Presidents Message

Happy New Year Everyone!

The Farmers' Almanac predicted that Winter 2016-2017, would bring more snow and colder-than-average temperatures throughout Canada. They haven't disappointed us!

With all of the fresh snow, Bay Lake looks like a Winter Wonderland. In case you haven't been to the lake recently, we will attempt to bring its beauty to you by sharing some photos in this Newsletter, and on our website.

Your Executive is expecting another busy year. We are currently working on some new initiatives, as well as, planning for our traditional annual events. Our biggest event and main fundraiser for the year as always is "The Pancake Breakfast". It will be here in no time, please mark May 21st on your calendars. A large portion of the funds raised at this event come from our Silent Auction sales. While we continue to receive wonderful support from many of the local merchants, with all the other fundraising organizations, donations are becoming harder to come by. To assist us again this year, we are seeking donations from you, friends, and family. Should you have any new items that are suitable for our auction, please set them aside. In our Spring Newsletter we will advise where/when they can be dropped off.

We look forward to seeing you all again this year and thank you for your continued support.

Sherry Vey



NEWSLETTER

Winter 2017



Earth Hour-2017 **Saturday March 25th** **8:30-9:30pm**

Earth Hour is the world's largest symbolic show of support to protect our planet from climate change and inspire millions to live more sustainably. Earth Hour began in Sydney Australia in 2007 when 2.2 million homes and businesses turned off their lights. By 2008, 50 million people across 35 countries participated.

This year, as world landmarks such as the Sydney Harbour Bridge, CN Tower, Golden Gate Bridge and Rome's Colosseum stand in darkness, an incredible 178 countries and territories will be showing support for the future of our planet.



Bay Lakers have actively supported this initiative for many years. So let's settle down by the fire or join some neighbours under the stars and "raise a glass" to the Health of our Planet!

Fish Stocking Update

As many of you are already aware, in May 2016, the Ministry of Natural Resources granted Bay Lake a 3 year licence to stock our lake with Pickerel (fingerlings). We managed to locate a fish hatchery that could provide us Pickerel and we committed to purchasing fish when they were large enough to introduce to the lake in late fall / early winter.

Although our survival rate from the hatchery was less than expected and somewhat disappointing, the good news is that we deposited 78 good sized and healthy Pickerel through the ice. We are hopeful that this year's crop will be better and our plan is to significantly increase the number of fish purchased. We will keep you posted!

~The Fish Committee

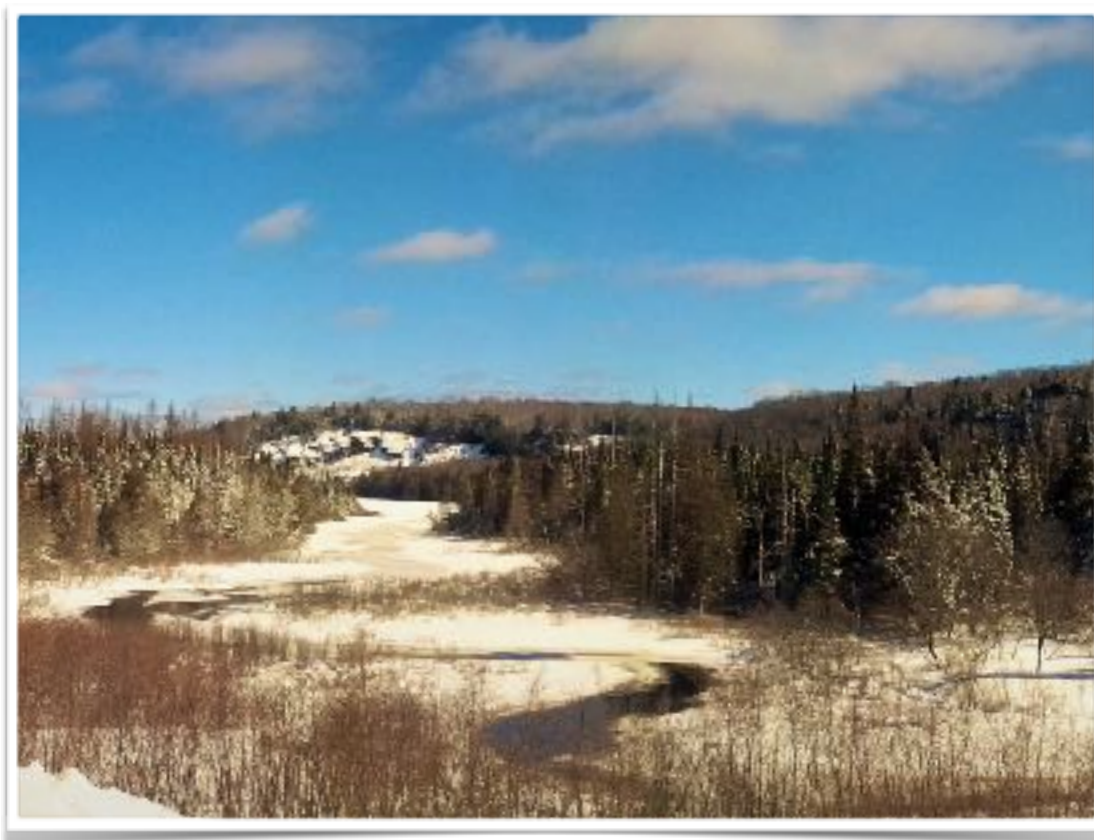
Winter Parking By-Law

Perry Township by-laws prohibit parking on roadways and turn-around areas which might interfere with the movement of traffic or the clearing of snow. As well, no person is to deposit snow or ice on a roadway, or push snow on or across roadways.



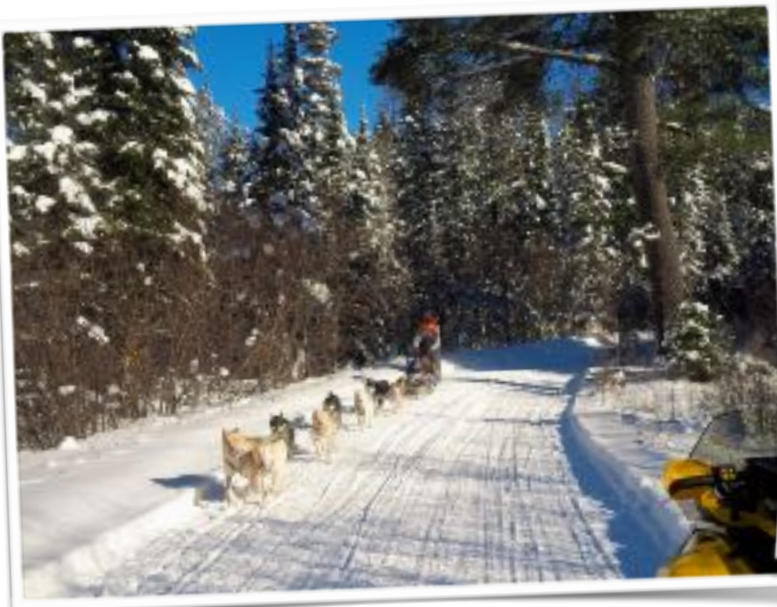
NEWSLETTER

Winter 2017



NEWSLETTER

Winter 2017



NEWSLETTER

Winter 2017



Lyme Disease- On the Rise in Canada

Lyme Basics

Lyme disease (often misspelled as “Lime” or “Lymes”) is an inflammatory infection that spreads to humans through tick bites.

Lyme is a borreliosis caused by borrelia bacteria, which commonly infects animals like birds, mice, other small rodents, and deer. Ticks pick up the bacteria by biting infected animals, and then pass it on to other animals, including human hosts. There are many strains or genospecies of borrelia that cause Lyme disease (borreliosis) in humans just as there are many strains of the flu virus that cause flu symptoms in humans, with some strains more virulent than others.

3 stages of Lyme (often blurred together quite rapidly)

Stage 1: Early infection (first few days after infection)

Stage 2: Infection spreads (days to weeks following infection)

Stage 3: Chronic Lyme (days to weeks after infection if left untreated, or not properly treated, for months/years after infection)

Lyme disease is most treatable during Stage 1. As time passes, both treatment and diagnosis become more difficult. Symptoms worsen during each stage of infection, ranging from flu-like symptoms to neurological illnesses, including paralysis. With chronic Lyme disease there is not one system of the body that can be unaffected... this includes various hormone production as well.

Tick ID & Removal

Canada is home to many species of ticks, but the Ixodes Tick – more often known as the “black-legged” or “deer” tick – is the most common Lyme-carrier.

Ixodes ticks...

- Have hard-shelled brown and black bodies, but appear greyish when engorged and some times are confused with a skin tag

- Have 8 legs as adults, but baby ticks have only 6

- Are 1-5 mm long, but adults can grow up to 20 mm when feeding

Common Symptoms Include:

Developing a rash, sometimes shaped like a “bull’s eye” mark.

Initial flu-like symptoms, such as: fever, headache, nausea, jaw pain, light sensitivity, red eyes, muscle aches and neck stiffness.

While some Lyme victims experience immediate symptoms after infection, others may have none for many months.

For More Information on Lyme Disease, Please Visit www.canlyme.com



NEWSLETTER

Winter 2017



Pitch-In Day

Mark Sunday, April 23rd @ 9:00am on your calendar!

Please come out, as Bill Paterson once again co-ordinates an intrepid team of volunteers. You will be joining 750 000 Canadians in the 50th annual Pitch-In Week Campaign. We meet at the boat ramp, receive our assigned clean-up zone and head out to the roadways around Bay Lake. Pick-up sticks, light gloves and garbage bags are provided. In previous years, the trash has been sorted and on its way to the Transfer Station well before noon. As a “thank you”, all volunteers will receive a free ticket for our annual Pancake Breakfast.

FYI...

Recycling one tonne of newspaper saves 19 trees, 3 cubic metres of landfill space, 4000 kilowatt hours of energy, 29 000 litres of water and 30 kilograms of air pollution.

(Recycling Council of Ontario)



Safe Driving

The snow banks are rising and this makes driveways and intersections less visible. Please take care entering and exiting the roadways around Bay Lake. Drivers are encouraged to slow down a bit and anticipate the unexpected (a snowmobile or walkers) at every curve in the road.

Snowmobiling

Snowmobilers who access the lake at the boat ramp are asked to please go around the ramp on the north side. This will reduce the risk of the concrete heaving in the spring. Also, please stay far enough out from docks to avoid the danger of personal injury and/or property damage.

Snowmobile trail conditions can be checked at the following site:

<http://ofsc.mapbase.ca/viewer> .

This OFSC interactive site covers all areas of Ontario.

Out On The Ice

Always be sure the ice is safe before heading out on the lake. It is a good idea to carry ice picks to claw yourself out of the water in case of an emergency situation.

The BLPOA strongly discourages driving full-sized vehicles on the lake. Let us not forget the Jeep, trailer and ice fishing hut that went through the ice several years ago.

NEWSLETTER

Winter 2017



Bay Lake Sign

We wanted to show off our newly-constructed sign for those who have not yet seen it!

We want to give a big shout-out to Richard Froud for making it look so fantastic!!

What a beautiful addition to our lake neighbourhood!!

We Want to Hear From You!!

If you have any photos or stories of happenings at the Lake, we would love to add them to our newsletter and website! Please send to vdarling@vianet.ca

Photo Credit

The gorgeous winter photos included in this newsletter were taken by lake resident, John Meyer!



NEWSLETTER

Winter 2017



Membership

WOW !! Approximately 50% of cottage owners support the BLPOA through their annual membership renewal. Thank you to all who faithfully support us.

This past year (2016/2017), we provided an appreciation plaque to everyone who paid their dues. There are only 9 left so don't delay getting yours. It is a pleasure to walk the cottage roads and see these supporter plaques displayed at the roadside.

Protect Your Investment by paying your dues!

Your Association works for you by:

- Comprehensive Water testing
- Benthic Testing (ensuring our mix of aquatic creatures are beneficial to our lake)
- Liasoning with the MNR, MOE, and Perry Township when relevant issues arise.
- Promoting our community with annual events.
- Communications - Newsletter and Website: www.baylakeontario.ca

Corn Roast

Our annual corn roast once again was a great success. With over 50 people in attendance, it was especially nice to see a lot of our newcomers come out to meet their neighbours, and join in the fun.

With four chillis made this year, we were sure not to run out. However, this not being a best ever chilli contest, the venison chilli intrigued a lot of people and it was the first to be finished!! Thanks Wayne, it was delicious!!

Considering our late September date, we were concerned about the corn, but thanks to Scott /Pam Milton they were able to get us very tasty sweet corn.

We also acknowledged a special Birthday, John Sutherland turned 80 this past summer so with Kathy's guidance we all sang Happy Birthday to John .

Once again, a special thank you to Wayne and Kathy Cook, who offer their beautiful home to us so we may host this event rain or shine!!

